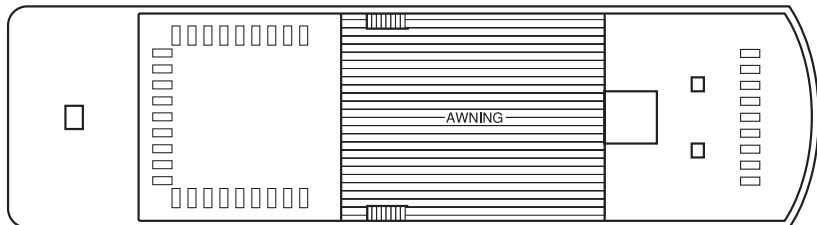


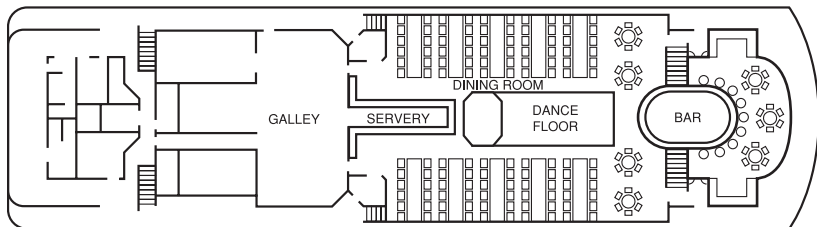


MURRAY PRINCESS DECK PLAN

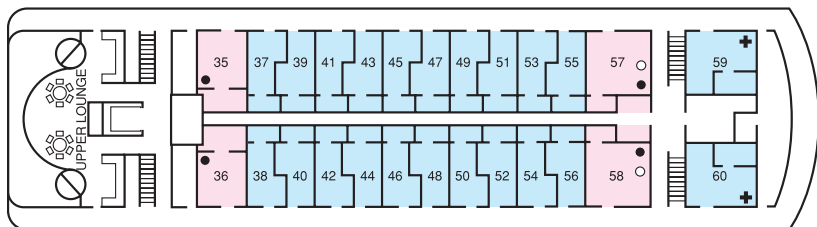
SUN DECK



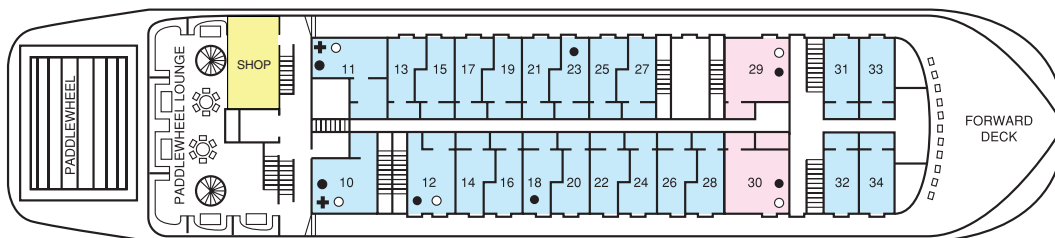
STURT DECK



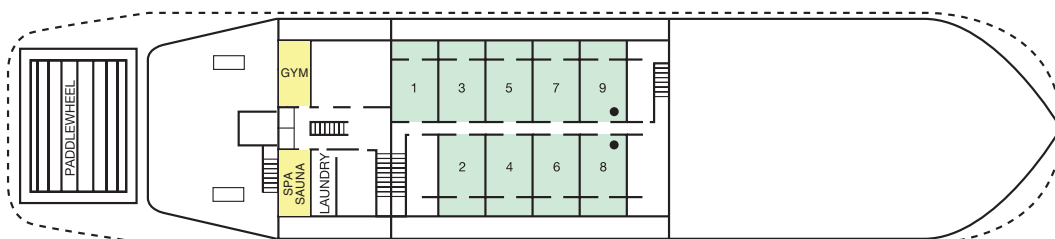
CADELL DECK



RANDELL DECK



CHAFFEY DECK



LEGEND

- STATE ROOM
- OUTSIDE CABIN
- INSIDE CABIN

All rooms have twin beds unless indicated as follows:

- EXTRA BED
- DOUBLE BED
- + DISABLED FACILITIES

MURRAY PRINCESS ACCOMMODATION

ACCOMMODATION

Accommodation: 60 cabins and staterooms each with private bathroom ensuite, air-conditioning, electric blankets, soaps, shampoo and towels; serviced daily. Each cabin is approximately 12sq metres. Two of the outside cabins on the Cadell Deck and their ensuite bathrooms are wheelchair accessible. Both cabins are opposite the lift for easy access to the dining and lounge decks.



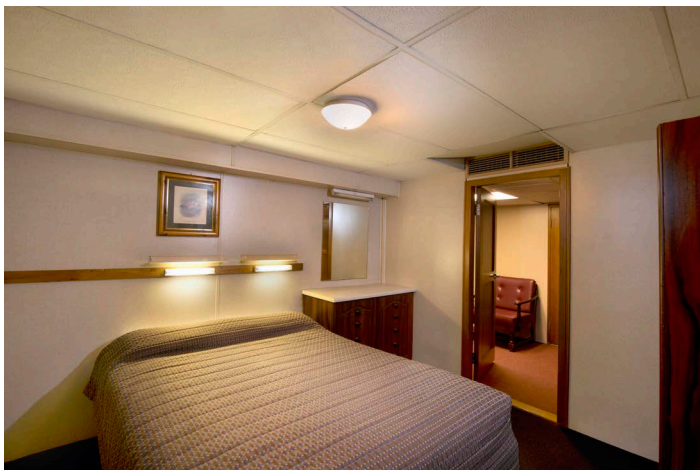
Stateroom

Our spacious Staterooms are located on the Randell and Cadell Decks. Each stateroom offers a double bed (some have an extra single bed) and opens onto the outside deck area. Mini-bars, fridges and tea and coffee making facilities are also included.



Outside Cabin

Outside cabins are located on the Randell and Cadell Decks. Each outside cabin opens onto the outside deck area with picture windows to view the passing scenery



Inside Cabin

Inside cabins are located on the lower Chaffey Deck and open onto a wide inside passageway. Inside cabins offer a twin or double bed configuration and have portholes facing the outside